

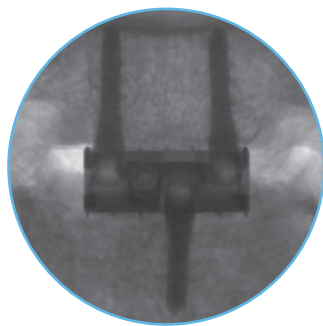


## The Optio-C System: Secure Fixation With No Profile

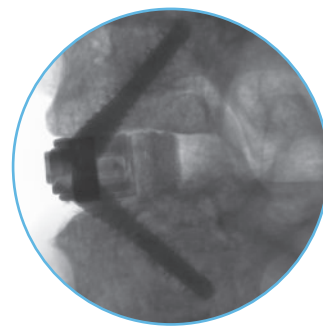
**Segmental Stability Study\*:** The images show the midline screw within the bone before and after cyclic loading (flexion/extension).

**Conclusion:** None of the screws evaluated showed signs of screw pullout or back-out, and there were no visual differences with regard to screw loosening.

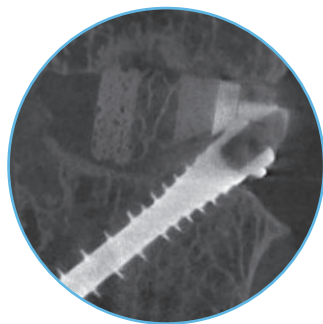
Images show the pre- and post-cycling micro-CT images of specimen implanted with Optio-C allograft spacer.



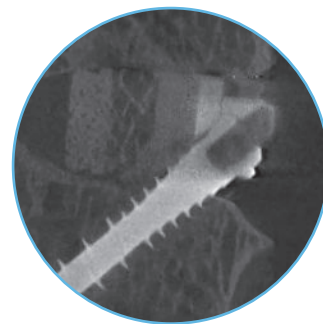
Anterior view



Lateral view



Before



After

\*Data on file.

### References:

1. Data on File. Demonstrated by mechanical testing per ASTM F1717.
2. Konz RJ, Jensen LM, Kincaid BL. Comparison of self-drilling and self-tapping cervical spine screws using ASTM F543-07. J ASTM Int. 2011;8(7):1–13.

For more information, visit [ZimVie.com](https://www.ZimVie.com)

**ZimVie Spine**  
10225 Westmoor Drive  
Westminster, CO 80021  
[ZimVie.com](https://www.ZimVie.com)



©2023 ZimVie Spine, Inc. All rights reserved.

All content herein is protected by copyright, trademarks and other intellectual property rights, as applicable, owned by or licensed to ZimVie Spine, Inc. or its affiliates unless otherwise indicated, and must not be redistributed, duplicated or disclosed, in whole or in part, without the express written consent of ZimVie Spine. This material is intended for health care professionals, the ZimVie Spine sales force and authorized representatives. Distribution to any other recipient is prohibited. PEEK-OPTIMA® Polymer is a trademark of Invibio Ltd. For product information, including indications, contraindications, warnings, precautions, potential adverse effects and patient counseling information, see the package insert and [www.ZimVie.com](https://www.ZimVie.com). 1015.1-US-en-REV0223



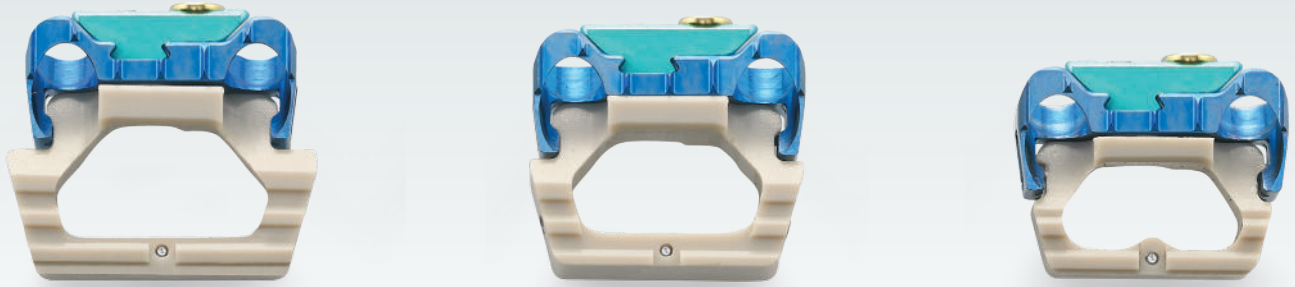
A Zero Profile Cervical  
Fusion Option



# Optio-C<sup>®</sup>

## Anterior Cervical System





## Strength Without Compromise

The Optio-C System is the industry's first zero-profile, modular stand-alone cervical device that offers allograft<sup>1</sup> and PEEK spacer options and delivers the strength, stability and fusion potential of a traditional anterior cervical discectomy and fusion (ACDF).<sup>2</sup>

### Fuse with confidence



#### Versatility

- Interbody spacers available in PEEK-OPTIMA® and allograft
- Three footprints combined with a wide variety of screw options allow surgeons to configure the best construct for patient anatomy
- Variable screw trajectories ease implantation above or below adjacent-level constructs



#### Minimalism

- Zero-profile design reduces anterior hardware and may reduce the risk of dysphagia and dysphonia
- Integrated screw fixation eliminates the need for additional plating when addressing disease adjacent to an existing fusion
- Sleek, low-profile instrumentation minimizes exposure and simplifies the surgical procedure



#### Security

- DiamondTip screw technology allows screws to be placed without pilot holes, reducing surgical steps
- Corticocancellous screw thread is designed to enhance bone purchase
- Secure antimigration system provides tactile and visual confirmation
- Pre-assembled locking mechanism secures all screws simultaneously

# The Optio-C System: Secure Fixation With No Profile



## PEEK or Allograft\* Spacer Options

- Three footprints to accommodate patient anatomy
- Allograft consists of cortical and cancellous bone



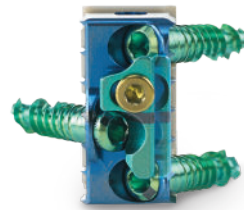
## Proprietary Screw Performance

- DiamondTip screw technology reduces surgical steps because screw can be placed without pilot hole<sup>2</sup>
- Corticocancellous thread designed to enhance bone purchase



## Optimize Load Sharing on Spacer

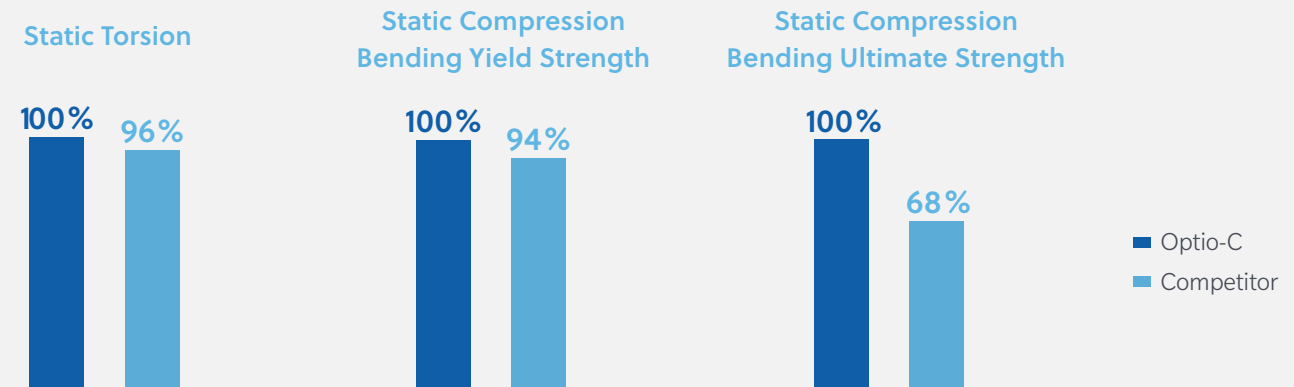
- Unique load-sharing interface designed to facilitate fusion
- Variable angle screws designed to prevent stress shielding

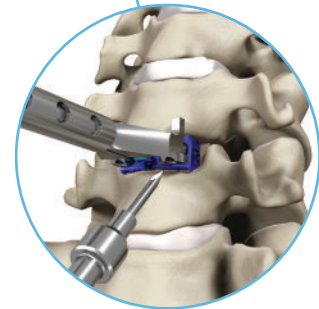
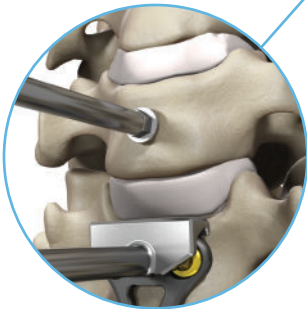


## Confidence in Locking Mechanism

- Secure antimigration system provides tactile and visual confirmation
- Pre-assembled locking mechanism secures all screws simultaneously

## Plate Strength Equivalent to a Traditional Cervical Plate<sup>1</sup>





### Innovative Distraction Pins

- Facilitate implantation with existing hardware
- Accommodate different plate widths and thicknesses

### Minimally Invasive Procedure

- To minimize exposure, awls, drills and drivers are available in every configuration: straight, u-joint or flexible
- All drivers have a unique screw retention feature to accommodate various screw implantation angles

### Low-profile Instrumentation

- Inserter guide enhances visibility for a midline implant placement
- Drill guides designed to allow for easy site access

## Optio-C Implant Specifications

### Plate, PEEK Spacer and Allograft†

FOOTPRINT (L × W)	HEIGHT (ANTERIOR)
12 mm × 14 mm	6 mm–12 mm
14 mm × 16 mm	6 mm–12 mm
15 mm × 18 mm	6 mm–12 mm

### Screw

LENGTH	DIAMETER	TRAJECTORY
12 mm (green)	3.3 mm	40° variable angle ± 5° (cephalad/caudal)
14 mm (magenta)	3.3 mm	
16 mm (gold)	3.3 mm	

### Plate

WIDTH	HEIGHT
16 mm	6 mm–12 mm (1 mm increments)

†Structural allograft/autograft