



Mobi-C® Cervical Disc Compared to ProDisc® C Total Disc Replacement

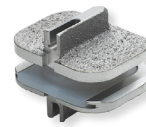
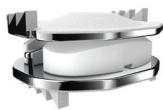
Selling Mobi-C vs. ProDisc C

Mobi-C has two-level indications, ProDisc C does not

- Mobi-C has been studied and is superior to ACDF at two levels¹
- ProDisc C was only studied at one level
- Despite being on the US market since 2007, no additional clinical investigations have been initiated by the legal manufacturer for two-level indications or otherwise

Mobi-C was designed to improve upon 1st generation technologies like ProDisc C

- 1st generation discs rely upon a fixed core design that forces the patient’s biomechanics to adapt to the implant
- Mobi-C relies upon an adaptive, mobile bearing core that adapts to the patient’s natural movement
- Keel cuts require additional operative time and grossly violate the integrity of the disc endplate. Mobi-C uses teeth designed to fixate the device without the need for keel cuts



Mobi-C Cervical Disc	ProDisc C Total Disc Replacement
<p>Motion Technology: Mobile Bearing Core</p> <ul style="list-style-type: none"> • Designed to adjust to the instantaneous axis of rotation (IAR) 	<p>Motion Technology: Fixed Core (Ball & Socket)</p> <ul style="list-style-type: none"> • Is not able to adapt to IAR
<p>Technology Attributes</p> <ul style="list-style-type: none"> • Mobile core adapts to the patient’s natural movement through a 3 piece design designed to allow independent and coupled motion <ul style="list-style-type: none"> – Domed surface designed to articulate angularly with the superior endplate – Flat bottom designed to translate up to 1 mm and rotate on the inferior endplate 	<p>Technology Attributes</p> <ul style="list-style-type: none"> • Forces patient’s biomechanics to adapt to implant positioning
<p>Fixation Technology = Bone Sparing Lateral Teeth</p> <ul style="list-style-type: none"> • Teeth designed not to violate integrity of endplate 	<p>Fixation Technology = Central Keels</p> <ul style="list-style-type: none"> • Endplate cuts of 2 mm required to insert cage

Mobi-C’s clinical studies were substantially more robust than that for ProDisc C.

- ProDisc C’s claims compared to ACDF are limited to 2-year data as patient fallout at 5-years left their data underpowered for extending claims
- In addition, long-term data for adjacent segment disease and heterotopic ossification (HO) is available for Mobi-C and not reported for ProDisc C



1 Level Results Reported at 5 Years for Mobi-C and ProDisc C ²⁻³		
	Mobi-C	ProDisc C
Follow Up	85.5%	72.7%
Mean ROM (F/E) Improvement from Baseline	2.12 Degrees	.035 Degrees
Progression of Adjacent Segment Degeneration	Above Level: 14.7% Below Level: 2.4%	Not Reported
0% HO Progression Stable	92.2%	Not Reported
Mean NDI Scores	18.0	20.0
Key Findings at 5 Years	<ul style="list-style-type: none"> • Comparison to Control • Adjacent Segment Disease • Range of Motion • Adjacent Segment Disease • Heterotopic Ossification 	<ul style="list-style-type: none"> • Comparison to Control* • Adjacent Segment Disease* • Range of Motion • Adjacent Segment Disease* • Heterotopic Ossification*

References

1. Mobi-C Summary of Safety and Effectiveness Data (PMA 110009) at www.fda.gov for complete Mobi-C study results.
2. ProDisc 5 year data is from: Spine 38(3):203-209, 2013.
3. Mobi-C 1L 5 year data is from: Int J Spine Surg DOI:10.14444/3010

For more information, visit ZimVie.com

Caution: Federal (USA) law restricts this device to sale by or on the order of a physician. Rx Only. Please see the product Instructions for Use for a complete listing of the indications, contraindications, precautions, warnings and adverse effects.

Unless otherwise indicated, as referenced herein, all trademarks and intellectual property rights are the property of ZimVie Inc. or an affiliate; and all products are manufactured by one or more of the spinal subsidiaries of ZimVie Inc. (Zimmer Biomet Spine, Inc., Zimmer Spine, LDR Medical, etc.) and marketed and distributed by Zimmer Biomet Spine and its authorized marketing partners. Product clearance and availability may be limited to certain countries/regions. This material may not be copied or reprinted without the express written consent of ZimVie. ZV1242 REV A 06/23 ©2023 ZimVie Inc. All rights reserved.